



Indigent Status report

Madibeng Local Authority

7 August 2016



LIST OF CONTENTS

1	Madibeng Local Municipality demographic information.....	3
2	Introduction and scope of contract	3
3	Purpose of this report	3
4	External data verification process.....	3
5	Overall status	4
6	Summary of indigent applications	5
6.1	Indigent Applications Outcome Per Village	5
6.2	Total applications per gender	7
6.3	Indigent Applicants Per Age Group.....	8
6.4	Declined Applications Per Reason Code	10
7	Conclusion and recommendations	12

1 Madibeng Local Municipality demographic information

The Madibeng Local Municipality is located in the Bojanala Platinum District Municipality within the North West province between the Magaliesberg and the Witwatersrand mountain range. Madibeng means 'the place of water'. The name is derived from the area's resources that characterize the natural beauty of an area which encompasses the Hartbeespoort, Rooikoppies, Vaalkop and Klipvoor Dams, all of which contribute to the area in terms of tourism.

The Municipality includes approximately 44 villages and 9 000 farm areas. Madibeng is centrally situated (approximately 50 km from Pretoria, 55 km from Johannesburg and 60 km from Rustenburg) and is easily accessible with various road networks, amongst others the N4 toll road, which is running from various directions through Madibeng to Mmabatho, as well as a railway line and airport for light aircraft.

As per census of 2011 the total population of Madibeng was 477 381. A total of 30,3% of the 160 724 households are female headed. The community has an unemployment rate of just over 30%, and a 38,2% youth unemployment rate.

2 Introduction and scope of contract

To manage the equitable share, every municipality must adopt an indigent support policy and actively manage the needs of the Indigents in terms of supply of free basic services and alternative energy if applicable.

The Madibeng Local Municipality appointed OLE Power to provide services in respect of the following:

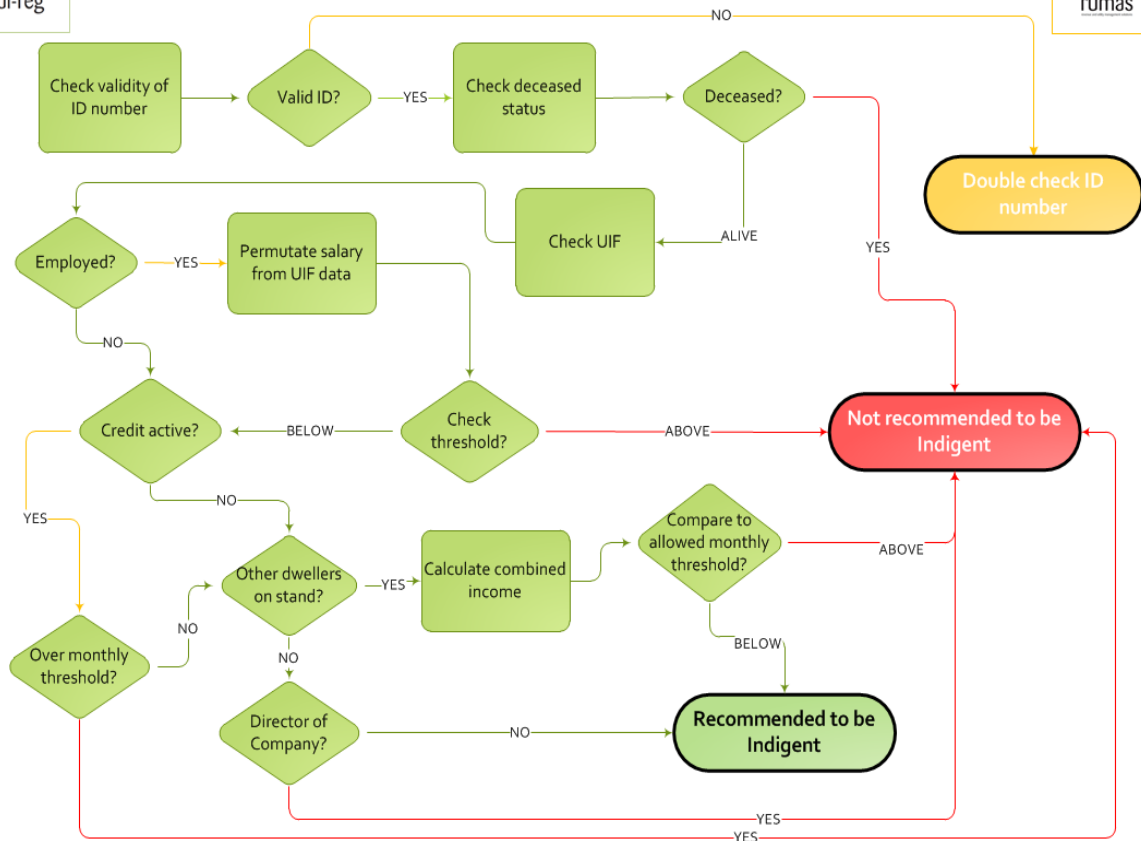
- Management of the applications for Indigent status
- Verification of applications to establish an Indigent register for upload to the billing system
- Reporting

3 Purpose of this report

The purpose of this report is to give feedback to the Client on the second interim status report on Indigent applications as captured until end July 2016.

4 External data verification process

The process below outlines the approach followed in determining the authenticity of data and whether an applicant will be recommended or not for benefits under the Indigent programme.



The Indigent policy is silent on the value of a property belonging to an applicant but does mention that an applicant should not have more than one property. There are 167 cases where the applicants owns houses in excess of R 75 000.00

5 Overall status

This section outlines the statuses of the different villages. The following was found when the data was analysed:

- The total of number of unique records to date was 33 455.
- There were 2 833 records with invalid ID numbers. In an attempt to identify the correct applicant a 10 digit verification method was performed (as part of the verification process explained in paragraph 3 above (external data verification)). There are 1 184 records where we have attempted to suggest the correct applicant but with no success.
- 28 593 of the 33 455 are recommended as approved and 4862 declined. The reasons for decline are based on the verification process diagram in section 3 and the reasons for declining records are contained in the detailed analysis in a subsequent section.
- The 10 largest number of applications were from Maboloka, De Kroon, Mothotlung, Hebron, Majakaneng, Klipgat, Oukasie, Klipgat Jakalas Mapoch and Lethlabile, Lethlabile Block B, Mmakau,

6 Summary of indigent applications

This section outlines the status and statistics on records assessed for the various villages within the municipality.

6.1 INDIGENT APPLICATIONS OUTCOME PER VILLAGE

The following table contains the results for applications received per village:

Indigent applications outcome per village			
Village	Declined	Approved	Grand Total
BAPONG	65	268	333
BOKFONTEIN	29	190	219
BRITS	15	87	102
BROEDERSTROOM	1	1	2
DAMONSVILLE	72	262	334
DAMOSVILLE	40	215	255
DE KROON	121	959	1080
DIPOMPONG	4	70	74
ELANDSRAND	6	16	22
ERASMUS	1		1
ERASMUS ITSOTSENG	26	218	244
FAFUNG	1	43	44
GARANKUWA	7	35	42
HARTEBEEES	3	6	9
HARTEBEEESPOORT	1	15	16
HEBRON	394	1864	2258
ITSOTSENG	51	188	239
JERICHO	74	610	684
KGABALATSANE	180	717	897
KLIPGAT	401	2524	2925
KLIPGAT IKAGENG SECTION	5	66	71
KLIPGAT JAKALAS MAPOCH	57	583	640
KLIPGAT NDLOVU STANDS	10	73	83
KLIPGAT OUTLINE	13	65	78
KOSMOS	77	256	333
LETHABILE BLOCK F	40	412	452
LETHABILE BLOCK I	23	157	180
LETHABONG		1	1
LETHLABILE BLOCK F		1	1
LETHLAKANENG MALERATO	20	300	320

Indigent applications outcome per village

Village	Declined	Approved	Grand Total
LETLHABILE	544	2732	3276
LETLHABILE BLOCK A	46	203	249
LETLHABILE BLOCK B	88	414	502
LETLHABILE BLOCK C	35	366	401
LETLHABILE BLOCK E	21	177	198
LETLHABILE BLOCK G	34	236	270
LETLHABILE BLOCK I		3	3
LETLHAKANENG	17	115	132
MABOLOKA	343	2514	2857
MABOLOKA-LETHABONG	18	212	230
MADIDI	41	341	382
MADINYANE	7	41	48
MAJAKANENG	221	1438	1659
MICHA'S VIEW	9	23	32
MMAKAU	419	2283	2702
MMUPUDUNG	10	40	50
MODDERSPRUIT	124	575	699
MOILETSWANE	47	362	409
MOOINOOI	91	579	670
MOTHOTLUNG	427	1962	2389
OSKRAAL	61	320	381
OUKASIE	215	1511	1726
PECANWOOD	1		1
PHASHA MALOKA	27	214	241
PRIMINDIA	3	23	26
RABOKALA	47	275	322
RAMOGODI	19	164	183
RANKOTEA	16	104	120
RIETFONTEIN		1	1
ROBOKALA		6	6
ROCKVILLE	26	74	100
ROODEKOPIES	1	1	2
SCHAUMBURG	11	149	160
SCHOEMANSVILLE	2	2	4
SEGWAELANE	71	319	390
SHAKUNG	22	169	191
SONOP	39	293	332
THETHELE	14	86	100
WONDERKOP	7	64	71
Unknown	1		1
Grand Total	4862	28593	33455

6.2 TOTAL APPLICATIONS PER GENDER

The table below provides an overview of the total number of applications per gender.

Total applications per gender			
Village	Female	Male	Grand Total
BAPONG	199	134	333
BOKFONTEIN	97	122	219
BRITS	53	49	102
BROEDERSTROOM		2	2
DAMONSVILLE	202	132	334
DAMOSVILLE	163	92	255
DE KROON	414	666	1080
DIPOMPONG	52	22	74
ELANDSRAND	8	14	22
ERASMUS		1	1
ERASMUS ITSOSENG	120	124	244
FAFUNG	29	15	44
GARANKUWA	27	15	42
HARTEBEEES	2	7	9
HARTEBEEESPOORT	10	6	16
HEBRON	1378	880	2258
ITSOSENG	150	89	239
JERICHO	471	213	684
KGABALATSANE	514	383	897
KLIPGAT	1819	1106	2925
KLIPGAT IKAGENG SECTION	48	23	71
KLIPGAT JAKALAS MAPOCH	397	243	640
KLIPGAT NDLOVU STANDS	53	30	83
KLIPGAT OUTLINE	49	29	78
KOSMOS	165	168	333
LETHABILE BLOCK F	300	152	452
LETHABILE BLOCK I	127	53	180
LETHABONG		1	1
LETHLABILE BLOCK F	1		1
LETHLAKANENG MALERATO	219	101	320
LETLHABILE	2072	1204	3276
LETLHABILE BLOCK A	159	90	249
LETLHABILE BLOCK B	311	191	502
LETLHABILE BLOCK C	269	132	401
LETLHABILE BLOCK E	150	48	198
LETLHABILE BLOCK G	190	80	270
LETLHABILE BLOCK I	2	1	3
LETLHAKANENG	77	55	132
MABOLOKA	1764	1093	2857

Total applications per gender

Village	Female	Male	Grand Total
MABOLOKA-LETHABONG	154	76	230
MADIDI	251	131	382
MADINYANE	25	23	48
MAJAKANENG	1131	528	1659
MICHA'S VIEW	22	10	32
MMAKAU	1612	1090	2702
MMUPUDUNG	27	23	50
MODDERSPRUIT	450	249	699
MOILETSWANE	257	152	409
MOOINOOI	329	341	670
MOTHOTLUNG	1417	972	2389
OSKRAAL	209	172	381
OUKASIE	1007	719	1726
PECANWOOD	1		1
PHASHA MALOKA	166	75	241
PRIMINDIA	14	12	26
RABOKALA	190	132	322
RAMOGODI	86	97	183
RANKOTEA	64	56	120
RIETFONTEIN		1	1
ROBOKALA	3	3	6
ROCKVILLE	66	34	100
RODEKOPIES	1	1	2
SCHAUMBURG	106	54	160
SCHOEMANSVILLE	3	1	4
SEGWAELANE	256	134	390
SHAKUNG	130	61	191
SONOP	155	177	332
THETHELE	53	47	100
WONDERKOP	55	16	71
Unknown	1		1
Grand Total	20302	13153	33455

6.3 INDIGENT APPLICANTS PER AGE GROUP

The following chart displays a summary of the number of approved applications per age group:

Approved applications per age category						
Village	<21	22 - 35	36 - 55	56 - 65	>65	Grand Total
BAPONG	2	51	112	54	49	268
BOKFONTEIN	1	75	99	14	1	190
BRITS		3	16	15	53	87
BROEDERSTROOM			1			1
DAMONSVILLE		22	150	48	42	262

DAMOSVILLE	2	35	105	46	27	215
DE KROON	16	426	434	72	11	959
DIPOMPONG		3	24	16	27	70
ELANDSRAND			3	5	8	16
ERASMUS ITSOSENG	1	12	57	58	90	218
FAFUNG			11	11	21	43
GARANKUWA	1	8	11	4	11	35
HARTEBEEES		1		1	4	6
HARTEBEEESPOORT		2	4	1	8	15
HEBRON	18	282	718	397	449	1864
ITSOSENG	3	28	78	44	35	188
JERICHO	8	59	195	125	223	610
KGABALATSANE	7	140	288	113	169	717
KLIPGAT	9	379	818	527	791	2524
KLIPGAT IKAGENG SECTION		4	29	15	18	66
KLIPGAT JAKALAS MAPOCH		65	149	135	234	583
KLIPGAT NDLOVU STANDS		10	26	9	28	73
KLIPGAT OUTLINE		7	29	13	16	65
KOSMOS	9	118	110	13	6	256
LETHABILE BLOCK F		25	223	98	66	412
LETHABILE BLOCK I	1	18	115	13	10	157
LETHABONG			1			1
LETHLABILE BLOCK F					1	1
LETHLAKANENG MALERATO	4	52	112	63	69	300
LETLHABILE	19	336	1125	661	591	2732
LETLHABILE BLOCK A	1	10	50	64	78	203
LETLHABILE BLOCK B	1	14	118	168	113	414
LETLHABILE BLOCK C	1	18	178	98	71	366
LETLHABILE BLOCK E		7	67	51	52	177
LETLHABILE BLOCK G	1	21	129	50	35	236
LETLHABILE BLOCK I		1	1	1		3
LETLHAKANENG	1	13	43	20	38	115
MABOLOKA	19	285	858	539	813	2514
MABOLOKA-LETHABONG		5	76	74	57	212
MADIDI	1	17	59	90	174	341
MADINYANE		1	9	8	23	41
MAJAKANENG	15	255	622	275	271	1438
MICHA'S VIEW		6	15	2		23
MMAKAU	25	357	878	476	547	2283
MMUPUDUNG		1	14	6	19	40
MODDERSPRUIT	8	121	246	97	103	575
MOILETSWANE	1	16	84	86	175	362
MOOINOOI	3	183	319	65	9	579
MOTHOTLUNG	4	148	667	497	646	1962
OSKRAAL	2	94	155	41	28	320
OUKASIE	4	169	591	417	330	1511
PHASHA MALOKA		27	65	45	77	214

PRIMINDIA		1		5	17	23
RABOKALA	3	46	81	70	75	275
RAMOGODI		23	45	54	42	164
RANKOTEA	1	26	25	23	29	104
RIET FONTEIN					1	1
ROBOKALA		2	2	1	1	6
ROCKVILLE		20	41	9	4	74
ROODEKOPIES					1	1
SCHAUMBURG	11	61	65	9	3	149
SCHOEMANSVILLE					2	2
SEGWAELANE	4	43	119	57	96	319
SHAKUNG		6	25	31	107	169
SONOP	2	70	167	35	19	293
THETHELE	1	17	42	15	11	86
WONDERKOP	2	16	18	13	15	64
Grand Total	212	4261	10917	6063	7140	28593

The following should be noted from the above:

- The age category 36-55 years contains the most applications.
- There are 212 households where the approved applicant is younger than 21. Care should be taken in terms of further support to this child headed households.
- An alarming 75% of applicants are below 65 years of age. These applicants are generally still fit for work and programs should be structured to create work in order to support these households and eventually make them less dependent on grants.
- A total of 85% of applications are recommended to be approved.

6.4 DECLINED APPLICATIONS PER REASON CODE

The table below outlines the declined applications – grouped into categories of reasons.

Village	Deceased	Director of Company	Director of Company & Employed	Not on File	Grand Total
BAPONG		16	6	43	65
BOKFONTEIN	1	4	10	14	29
BRITS		7	3	5	15
BROEDERSTROOM				1	1
DAMONSVILLE		37	5	30	72
DAMOSVILLE		17	1	22	40
DE KROON	3	14	9	95	121
DIPOMPONG		3		1	4
ELANDSRAND		5		1	6
ERASMUS			1		1
ERASMUS ITSOSENG		11	5	10	26

Village	Deceased	Director of Company	Director of Company & Employed	Not on File	Grand Total
FAFUNG				1	1
GARANKUWA	1	1	1	4	7
HARTEBEEES		2	1		3
HARTEBEEESPOORT		1			1
HEBRON	1	108	68	217	394
ITSOSENG		17	7	27	51
JERICHO		10	10	54	74
KGABALATSANE		64	38	78	180
KLIPGAT	2	104	62	233	401
KLIPGAT IKAGENG SECTION			3	2	5
KLIPGAT JAKALAS MAPOCH	1	17	19	20	57
KLIPGAT NDLOVU STANDS		5	1	4	10
KLIPGAT OUTLINE		2	1	10	13
KOSMOS		9	5	63	77
LETHABILE BLOCK F		17	9	14	40
LETHABILE BLOCK I		14	4	5	23
LETHABONG	0	0	0	0	0
LETHLABILE BLOCK F	0	0	0	0	0
LETHLAKANENG MALERATO		11	1	8	20
LETLHABILE	6	154	93	291	544
LETLHABILE BLOCK A		24	5	17	46
LETLHABILE BLOCK B		46	17	25	88
LETLHABILE BLOCK C		18	7	10	35
LETLHABILE BLOCK E		9	4	8	21
LETLHABILE BLOCK G		14	7	13	34
LETLHABILE BLOCK I	0	0	0	0	0
LETLHAKANENG		3	2	12	17
MABOLOKA	6	98	36	203	343
MABOLOKA-LETHABONG	1	2	5	10	18
MADIDI		12	16	13	41
MADINYANE		4	1	2	7
MAJAKANENG	1	22	19	179	221
MICHA'S VIEW		2	1	6	9
MMAKAU	11	71	51	286	419
MMUPUDUNG			3	7	10
MODDERSPRUIT	1	15	8	100	124
MOILETSWANE		8	6	33	47
MOOINOOI		8	6	77	91
MOTHOTLUNG	9	188	96	134	427
OSKRAAL	1	19	6	35	61
OUKASIE	5	79	26	105	215

Village	Deceased	Director of Company	Director of Company & Employed	Not on File	Grand Total
PECANWOOD		1			1
PHASHA MALOKA		1	2	24	27
PRIMINDIA			1	2	3
RABOKALA		11	11	25	47
RAMOGODI		5	5	9	19
RANKOTEA		5	5	6	16
RIETFONTEIN	0	0	0	0	0
ROBOKALA	0	0	0	0	0
ROCKVILLE		8	3	15	26
RODEKOPIES		1			1
SCHAUMBURG		1		10	11
SCHOEMANSVILLE		1	1		2
SEGWAELANE	1	21	16	33	71
SHAKUNG		7	3	12	22
SONOP		5	1	33	39
THETHELE		2		12	14
WONDERKOP			2	5	7
Unknown			1		1
Grand Total	51	1361	736	2714	4862

7 Conclusion and recommendations

There are still approximately 10 000 applications in the final stages of capturing and verification. A report on the final figures will be submitted in due course.

It should be mentioned however that there had been just more than 11 000 previously retrieved from the various MS Excel spreadsheets. Now there are 33 455 – a vast improvement on the registered number of Indigent households.